



# Lingraphica Essentials

## Discover

1

## Sign In!

- If you are joining as a group, each individual **MUST** sign in separately from their own account to receive CEU credit
- You do not need to stay signed in; please join for a few minutes in order for the system to log you as an attendee



2



Anna Reeve, M.S. CCC-SLP  
(she/her)  
Senior Clinical Educator  
[areeve@lingraphica.com](mailto:areeve@lingraphica.com)



3

## Agenda

- Lingraphica Origins
- Lingraphica Methodology and Trials
- Life Participation Approach
- Community and Consumer Resources
- Applications and Therapy
- Questions/Answers and Wrap-up



4

## Financial Disclosure

Anna Reeve is an employee of Lingraphica and thereby receives financial compensation from the Lingraphica Company.



5

## Learning Objectives

- The participant will define the Life Participation Approach
- The participant will define Lingraphica's company mission
- The participant will state 3 Lingraphica resources that may benefit clinicians and the clients they serve
- The participant will recognize the two types of trials Lingraphica offers depending on the type of support their client needs



6

## Lingraphica Origins



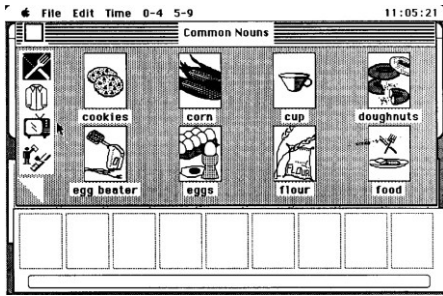
7

*Lingraphica empowers people with diverse communication needs to express themselves and connect with the world around them through technology for communication, therapy and community.*



8

# Where we've been...



9

# Lingraphica's AAC Devices



**TouchTalkPlus**

**MiniTalk**

**TouchTalk**



10

## Hub

- One platform for easy access to AAC, therapy, and community
- Real-time data syncing through individual user accounts
- Flexible design to meet user's needs
  - Functional phrase-based communication
- Supports multimodal communication
  - Talk, Type, Draw, Media



11

## Research

- Improved outcomes for chronic aphasia clients
  - Compensatory use
  - Rehabilitative benefits (*Steele, 2004*)
  - Increased life participation (*Dietz, 2020*)
- Ongoing research to drive product design
  - User testing
  - Feedback from SLPs and users
  - Strive to balance features with simplicity for ease of use
- Virtual aphasia community attendance leads to improved confidence, hope, and motivation for recovery (*Reed et al, 2022*)



12

# Lingraphica Methodology



13

## The Power of AAC



Increased independence for everyday activities



Ability to better participate in day-to-day life



Fewer communication breakdowns



Better connection with family and friends



Improve and practice speech



14

## Communicative Benefits

### Four Ways to Communicate

- Talk: tap a card
- Draw: use the whiteboard
- Media: photos and videos
- Type: text to speech

All of these can also cue verbal speech



 **Lingraphica®**

15

## Fundamental Benefits of AAC



- Prosthetic
- Orthotic
- Therapeutic

 **Lingraphica®**

16



## Prosthetic Use



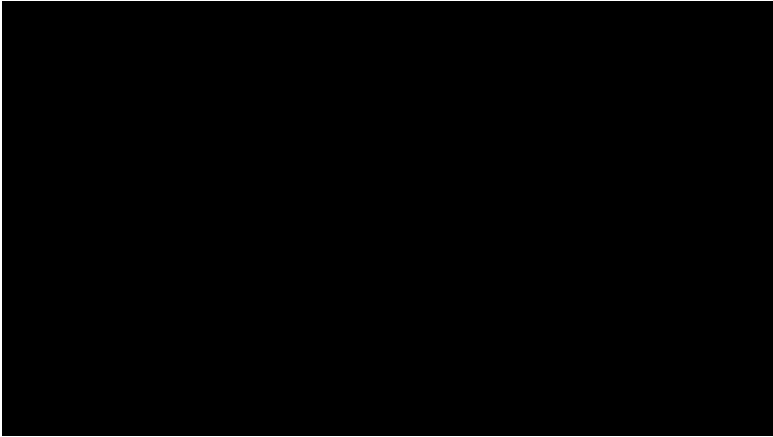
17

## Orthotic Use



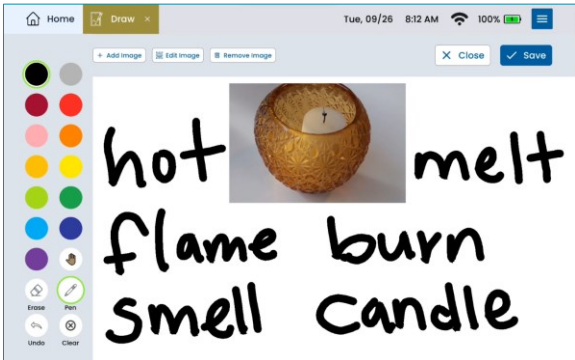
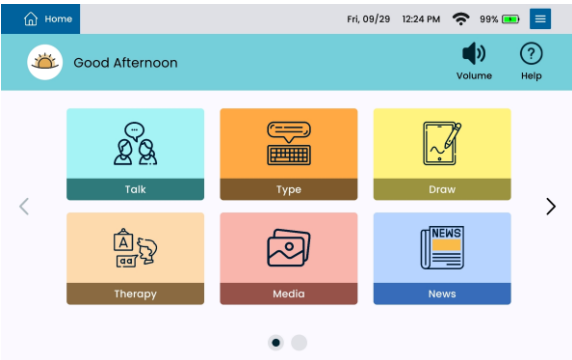
18

# Orthotic Use



19

# Therapeutic Benefits



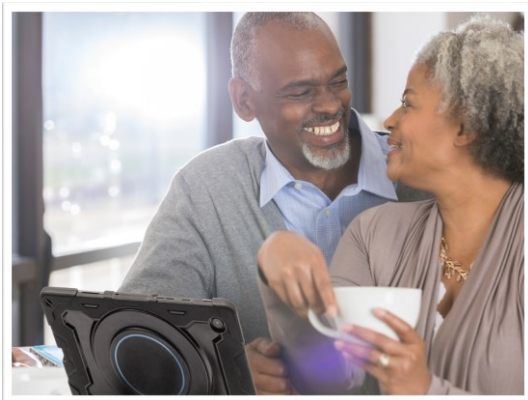
20

# Lingraphica Trials



21

## AAC Device Candidacy



- Mod-severe expressive impairment
- Communication Partner
- Physical access



22

## AAC Device Candidacy

There is NO:

- Prerequisite skill set
- Minimum or maximum age
- Minimum amount of time post-onset to wait
- Tech experience required

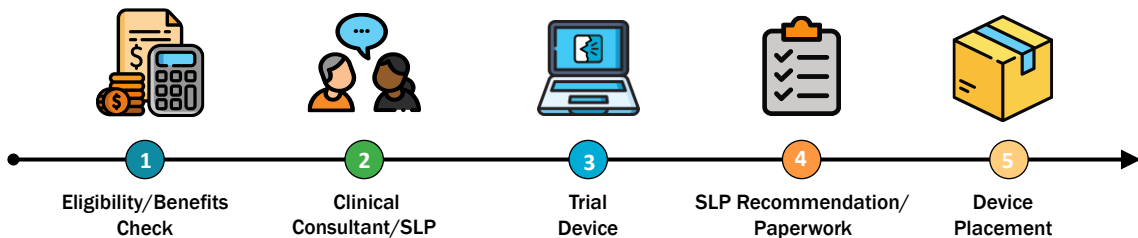


*Dietz, Wallace & Weissling, 2020*



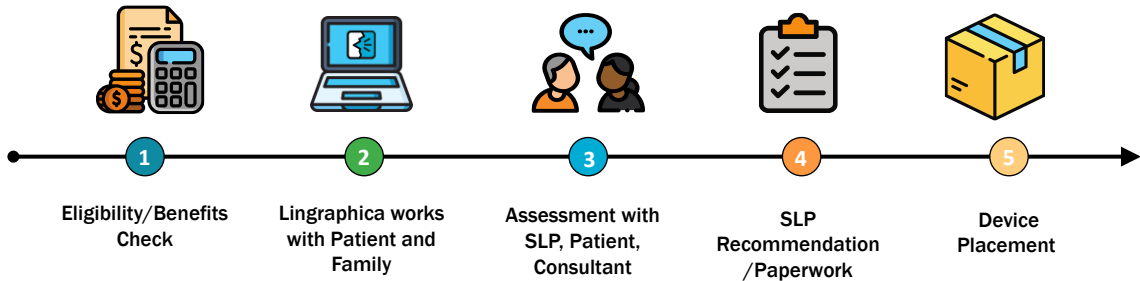
23

## SLP-Led Device Trials – The Process



24

## At-Home Device Trial Program



25

## Funding

Lingraphica works with:

- Medicare
- Medicaid
- Private insurance plans
- Alternate funding sources



26

# Life Participation Approach



27

## Life Participation Approach

- Communication impacts every area of one's life
  - Relationships
  - Identity and role
  - Environmental barriers
  - Social and community engagement
- Success is functional improvements that
  - Impact an individual's day to day life
  - Open doors to more activities and partners
  - Improve how they see themselves and their role in life

*(Worrall et al., 2011)*  
*(Chapey et al., 2000)*



28

## Communication Partners

- Participation is often reliant on communication skills and/or adequate supports

- Communication partners are essential collaborators
- Vested in communication success
- Unique insight into users' life & PLOF
- Likely need explicit training for generalization to daily communication interactions

*(Simmons-Mackie, 2013;  
Binger & Kent-Walsh, 2012,  
Beukelman, 2002)*

- AAC users report:

- Biggest barrier is behavior of speaking people

*(Hartmann & Sheldon, 2019)*



29

## Community and Consumer Resources



30

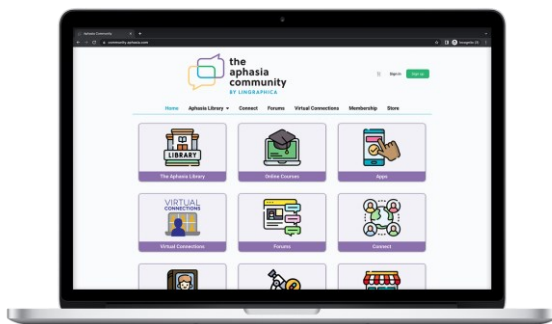
# Communication Coaching

- For users and communication partners with their own Lingraphica device
- Additional training on:
  - Device navigation
  - Assistance with settings and accessories
  - Customization and personalization
  - Functional activities for more effective communication at home and in the community



31

# The Aphasia Community by Lingraphica



- Online community platform for individuals with aphasia, their loved ones, and the professionals that serve them
- Forums, educational resources, and opportunities to connect with others

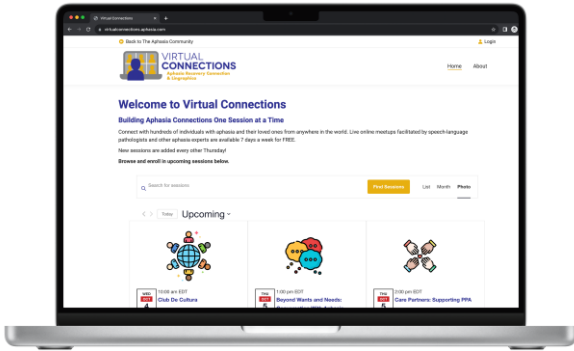
[aphasia.com](https://aphasia.com)



32



# Virtual Connections



Connect with hundreds of individuals with aphasia and their loved ones from anywhere in the world. Live online meetups facilitated by speech language pathologists and other aphasia experts are available 7 days a week for free.

[virtualconnections.com](http://virtualconnections.com)



33

# LCP



34

## Applications and Therapy



35

## Lingraphica's Free Apps

### SmallTalk



- Communication Apps
  - Activities of Daily Living
  - Conversational Phrases
  - ICU
  - Frases de Conversación
- Practice Apps
  - Mouth Position Videos
  - Oral Motor Exercises
  - Dysphagia

36

## Lingraphica's Free Therapy Tools



 **Lingraphica®**

37

## Conclusion

- Introduction
- Lingraphica Origins
- Lingraphica Methodology and Trials
- Life Participation Approach
- Community and Consumer Resources
- Applications and Therapy
- Questions/Answers and Wrap-up

 **Lingraphica®**

38

## Next Steps

- Take the next course:
  - *Essentials: Explore*

- Start a trial!

[www.lingraphica.com/start-trial/](http://www.lingraphica.com/start-trial/)



39

## Earn CEUs For Today's Course

- Return to [learn.aphasia.com](http://learn.aphasia.com)
- Go to your learning center
- Look in the "current" tab and find this course
- Launch post-work (learning assessment and course eval)
- When finished, it will show in "completed" tab
- Please complete within 48 hours



40

# Questions & Answers



41



# Thank You!

42

## Resources

Beukelman, D. & Ball, L. Improving AAC use for persons with acquired neurogenic disorders: understanding human and engineering factors. *Assistive Technology*. 2002 Summer;14(1):33-44.

Chapey, R., Duchan, J., Elman, R., Garcia, L., Kagan, A., Lyon, J. & Simmons Mackie, N. (2000). Life Participation Approach to Aphasia: A Statement of Values for the Future. *ASHA Leader*, 5(3).

Dietz, A., Wallace, S., and Weissling, K. (2020). Revisiting the Role of Augmentative and Alternative Communication in Aphasia Rehabilitation. *American Journal of Speech Language Pathology*, 29(2), 909-913.

Hartmann, A., & Sheldon, E. (2019, November 8). *Just ask: What we can learn from AAC users*. AssistiveWare. Retrieved September 21, 2022, from <https://www.assistiveware.com/blog/just-ask-aac-users>



43

## Resources

Reed, A.C., Carter, S.L. & Steele, R.D., Virtual Connections Survey, September 16, 2022

Steele, R. D. (2004). Benefits of Advanced AAC Technology Uses to Adults with Acquired Aphasia. *Augmentative and Alternative Communication* (pp 3-7).

Worrall, L., Sherratt, S., Rogers, P., Howe, T., Hersh, D., Ferguson, A. & Davidson, B. (2011). What people with aphasia want: Their goals according to the ICF, *Aphasiology*, 25:3, 309-322, DOI: [10.1080/02687038.2010.508530](https://doi.org/10.1080/02687038.2010.508530)



44