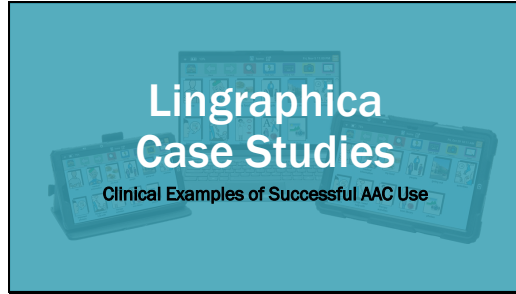
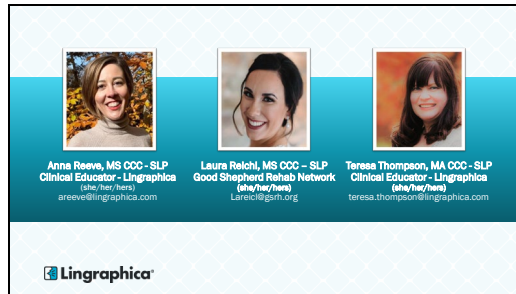


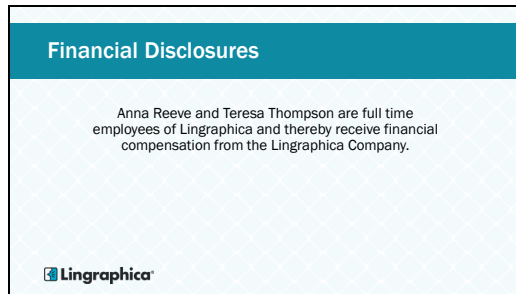
Slide 1



Slide 2




Slide 3



Slide 4

Learning Objectives


- Discuss candidacy for a Lingraphica AAC device
- Describe how patient and family goals influence AAC development
- State functional examples of daily use of a high tech AAC device in various clinical populations of AAC users

 Lingraphica

Slide 5

Agenda

- Lingraphica device overview
- Personalized goals and outcome planning
- Individual case studies
- Components of success with AAC
- Review
- Questions

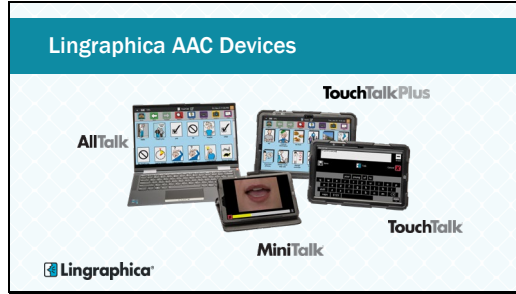
 Lingraphica

Slide 6

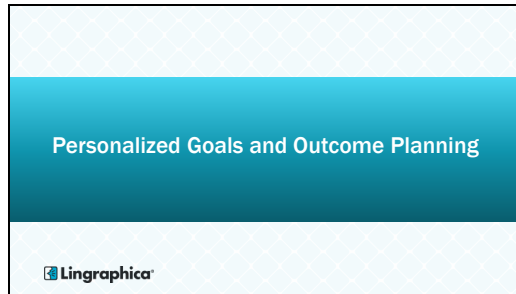
Lingraphica Device Overview

 Lingraphica

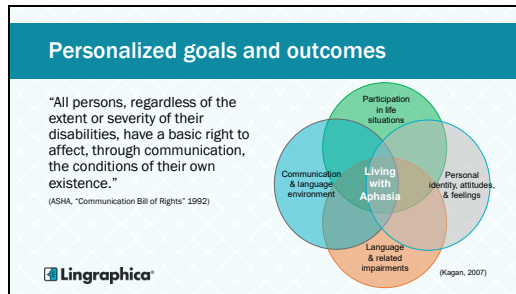
Slide 7



Slide 8



Slide 9




Slide 10

Individual Case Studies



Slide 11



Case Study 1: Michelle



Slide 12

Case Study: Michelle



- Background Info:
 - 39-year-old female
 - S/p acute L MCA CVA
 - Seizure disorder, migraines
 - Mod-severe expressive aphasia, mild receptive aphasia, mild-mod apraxia
- Personal Info:
 - Daycare owner/director
 - Lives with fiancé and two sons



Slide 13

Strengths and Barriers



- Strengths
 - Support system
 - Motivation
 - Use of letter board
 - Tech savvy
- Barriers
 - Hospitalization, medical complications
 - Reduced reading comprehension at the paragraph level



Slide 14

Patient Goals



- Text, email parents and staff
- Interview new staff
- Advocate for business
- Apply for grant
- Provide daycare lessons through scripting
- Improve receptive and expressive language skills



Slide 15

Device Trial

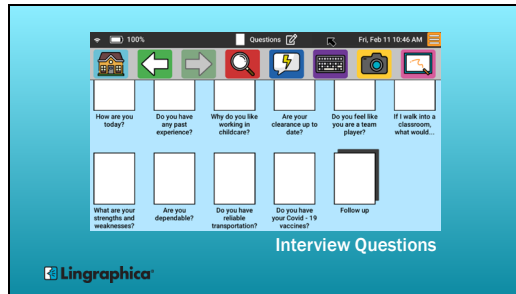
- Prolonged due to insurance coverage
- Sons or fiancé attended all sessions
- Trained family during sessions
- Patient able to complete basic programming
- Programmed family names, medications, interview questions, and scripts for staff meetings
- Functional goals with role playing interviews
- Completed training on therapy activities folder



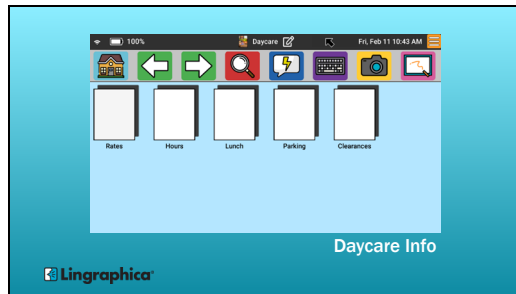
Slide 16



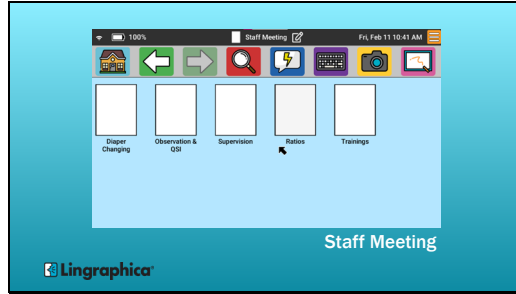
Slide 17



Slide 18



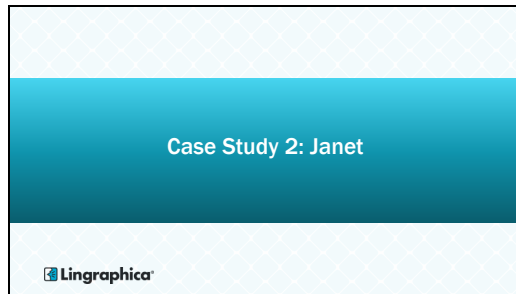
Slide 19



Slide 20




Slide 21




Slide 22

Case Study: Janet

- Background Info:
 - 54-year-old female
 - S/p L MCA CVA
 - Mod-severe Wernicke's aphasia, severe apraxia
- Personal Info:
 - Cashier
 - Lives at home with partner
 - Very outgoing





 Lingraphica

Slide 23

Strengths and Barriers

- Strengths
 - Writing
 - Supportive partner
 - Motivation
 - Tech savvy
- Barriers
 - Receptive deficits
 - Apraxia
 - Frustration



 Lingraphica

Slide 24

Patient/Family Goals

- Increase meaningful interactions with significant other, grown daughter and granddaughter
- Use device to give commands to dog
- Improve verbal speech



 Lingraphica

Slide 25

Device Trial

- Initial reluctance from significant other
- Patient able to program icons and pages
 - First session began programming in commands for dog
 - Programmed in family member names, eventually expanded to pages
- High level of independence with customizing, however easily frustrated
- Trained on therapy activities page
 - Mouth position videos as part of HEP



Lingraphica

Slide 26



Lingraphica

Slide 27





Lingraphica

Slide 28

Outcomes

- Improved yes/no validity
- Completed therapy activities independently
- Conversation initiation
- Speech improvements
- Gave commands to her dog with device
- Used device to communicate with medical staff in ICU



 Lingraphica

Slide 29


Case Study 3: Margaret


 Lingraphica

Slide 30

Case Study: Margaret

- Background Info
 - 57-year-old female s/p stroke
 - Baseline CP and dysarthria
 - Wheelchair bound
 - Hemiplegia of dominant side
- Personal Info
 - Lives with her son
 - Has consistent paid caregiver
 - SLP described home life as "difficult"



 Lingraphica

Slide 31

Strengths and Barriers

- **Strengths:**
 - Familiar communication partners
 - Some verbalizations
 - Motivation for improved independence
 - Good response to education on device
- **Barriers**
 - Initial reluctance to AAC
 - Difficult home life
 - Transient communication partners/people in home
 - Requires operational assistance with device



 Lingraphica

Slide 32

Patient/Caregiver Goals

- Order take out from Chinese food store
- Pay bills with credit card over the phone
- Order supplies needed from DME company





 Lingraphica

Slide 33

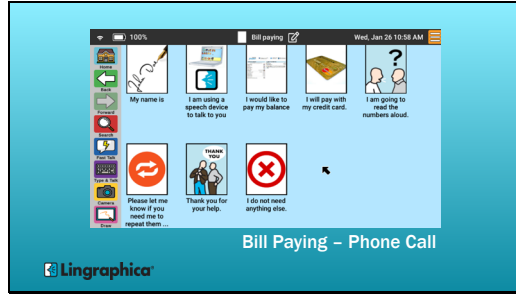
Device Trial

- Initial reluctance from patient and family
- Limited use for first few weeks
- Functional goals with role playing over phone
- CG education with primary aid
- Flexible stylus
- W/C Mount for easier access



 Lingraphica

Slide 34



Slide 35



Slide 36



Slide 37



Case Study 4: Ajay



Slide 38

Case Study: Ajay



- Background Info:
 - 84-year-old male
 - Primary progressive aphasia
 - Bilingual Hindi/English; losing English proficiency
- Personal Info:
 - Lives with wife
 - Grown, involved son



Slide 39

Strengths and Barriers


- Strengths:
 - Strong family support
 - Customization and message banking
- Barriers:
 - Poor awareness of breakdowns and errors
 - Memory decline




Slide 40

Patient/Family Goals

- Recall family names, grandchildren
- Increase communication
- Reduce errors
- Slow the progression of language loss
- Simple to use device with icons in English and primary language







Slide 41

Device Trial

- Son and wife attended all sessions
- Customized pages for all daily activities
- Family photos with names labeled
- Voice banking in primary language
- Food preferences and requests
- CG training to assist with initiation, gentle cueing
- Introduced other apps and high tech AAC device options





Slide 42






Slide 43

Outcomes

- Reduced communication breakdowns
- Multimodal stimulation on communication device
- Improved recall of family members, grandchildren names
- Visual & written memory aids
- Personal agency



Lingraphica

Slide 44


Case Study 5: Julie

Lingraphica

Slide 45

Case Study: Julie

- Background Info:
 - Adult female
 - Autism & Developmental Delay
 - Dysarthria
 - Some ASL; poor speech intelligibility
 - Previous speech therapy; limited functional change
- Personal Info:
 - Previously living with her aging mother
 - Group home environment d/t increased care needs





Lingraphica

Slide 46

Strengths and Barriers

- Strengths
 - Supportive, motivated mother
 - Receptive language skills
 - Interested in high tech device
- Barriers
 - Limited interest in low tech AAC
 - Pragmatic deficits
 - Combative behaviors secondary to communication, pain, medical issues




 Lingraphica

Slide 47

Patient/Family Goals

- Direct care
- Self advocacy
- Decrease frustration and combative behavior
- Simple to use communication aid for novel communication partners





 Lingraphica

Slide 48

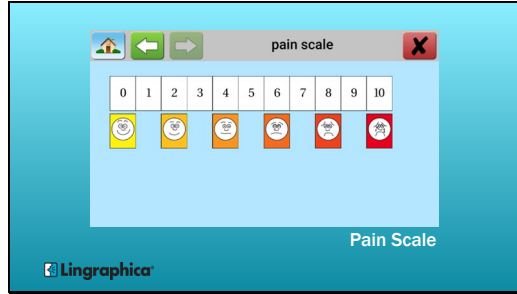
Device Trial

- Mother attended all sessions
- Trained group home staff during her visits
- Pt appeared engaged
- Benefited from immediate cause/effect
- Good comprehension and recall for navigation
- High turnover in group home, requiring intermittent retraining

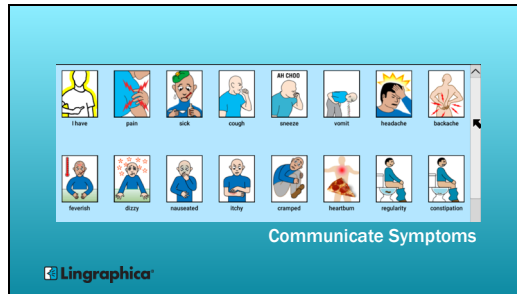


 Lingraphica

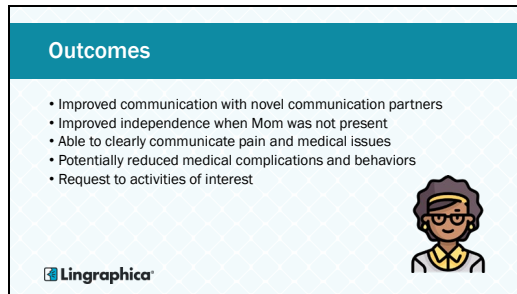
Slide 49



Slide 50




Slide 51



Slide 52



Case Study 6: Rose



Slide 53

Case Study: Rose



- Background Info:
 - 42 y/o female s/p stroke
 - Down syndrome
 - Recent onset seizure disorder
 - Previously able to read, write communicate at college level
 - Limited verbal stereotypical responses
 - Poor speech intelligibility



Slide 54

Strengths and Barriers


- Strengths
 - Consistent and caring paid caregivers
 - Supportive mother
 - Interested in music and theater
- Barriers
 - Endurance
 - Fatigue with daily seizures
 - Apraxia and significant cognitive deficits




Slide 55

Patient/Family Goals

- Communicate medical needs to caregivers
- Improve verbal speech, reading
- Improve quality of life
- Increase participation







Slide 56

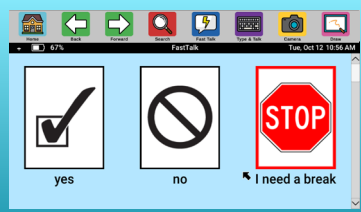
Device Trial

- Prolonged due to
 - Medical complications
 - Rehospitalizations
 - Fluctuating alertness
- Linguistic and cognitive stimulation
- Multimodal language activities
- Family and caregiver education






Slide 57



Basic Communication




Slide 58



Slide 59

Outcomes

- Improved yes/no validity
- Requesting and respected breaks from activity
- Improved family/caregiver awareness
- Access videos and music
- Communicate pain, discomfort, urinary and bowel needs



The Lingraphica logo is located in the bottom left corner of the slide.

Slide 60


Components of Success with AAC


The Lingraphica logo is located in the bottom left corner of the slide.

Slide 61

Components of success with AAC

- Patient centered goals and decision making
- Flexibility and highlighting patient strengths
- Customization
- Functional problem solving of CURRENT daily issues
 - Partner and caregiver buy-in was crucial
- Aim for meaningful, real-life outcomes
- Ongoing development as user needs change





 Lingraphica

Slide 62

Conclusion

- Lingraphica device overview
- Personalized goals and outcome planning
- Individual case studies
- Components of success with AAC





 Lingraphica

Slide 63

Next Steps

- Visit lingraphica.com to:
 - Start a device trial
 - Learn more: AAC Goal Setting 101
- Get hands on!
 - Schedule a live device demo
 - We will provide a loaner AAC device

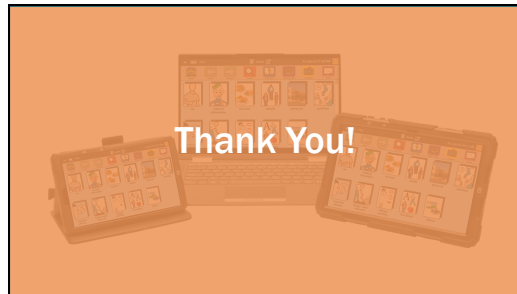


 Lingraphica

Slide 64



Slide 65



Slide 66